

TV mount hazard example



Note the flange

Mounting description

Note the Flange. The TV is attached to a mount system. The flange is screwed onto the pipe. The flanges keep the mount at a certain level and act as the attachment device to the pipe that comes down from the ceiling. This pipe is part of the apparatus.



Pipe

TV

Lower flange

Mount

Proper installation



Note the set screw. The set screw keeps the flange from coming loose/unscrewing from the pipe. The set screw should go through a slot in the side of the flange. This photo shows this set up.

The slot shows up on the photo as a shiny area. It has a U shape



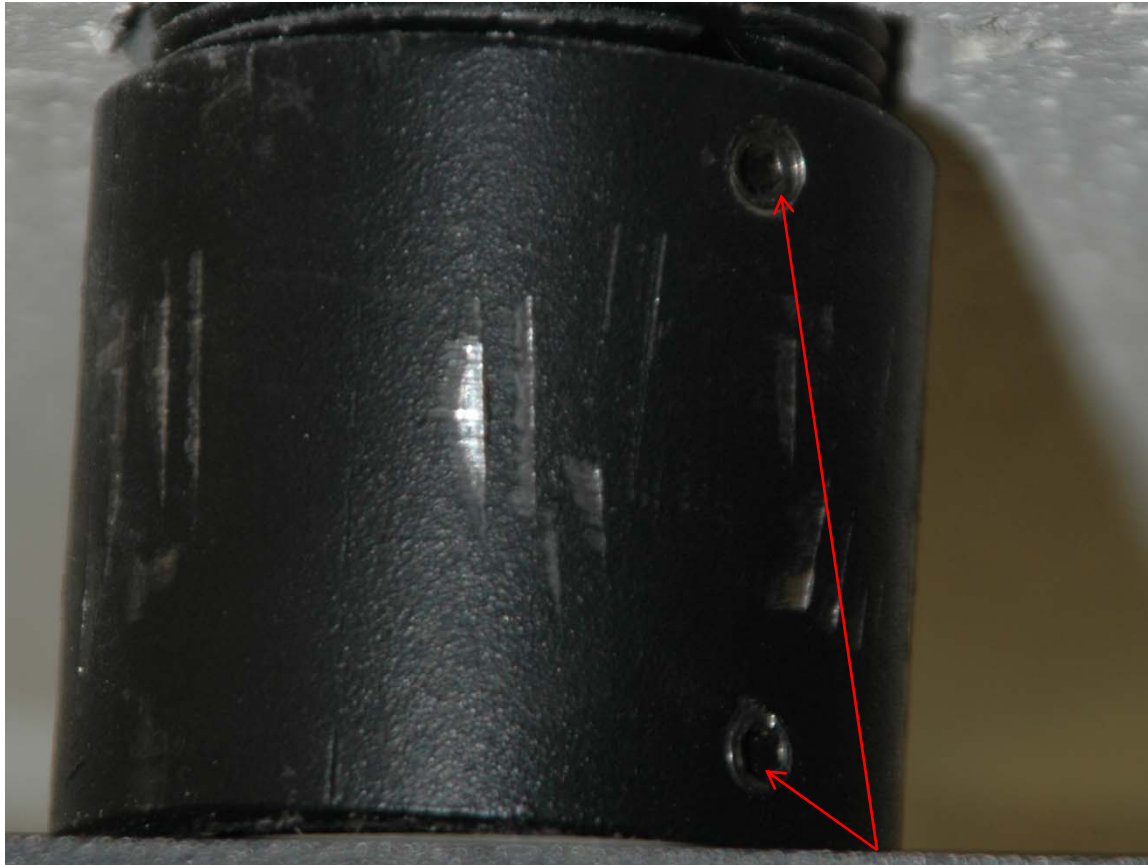
Note set screw

Note the knockout

Set screw is set into the knockout. This is the correct installation.

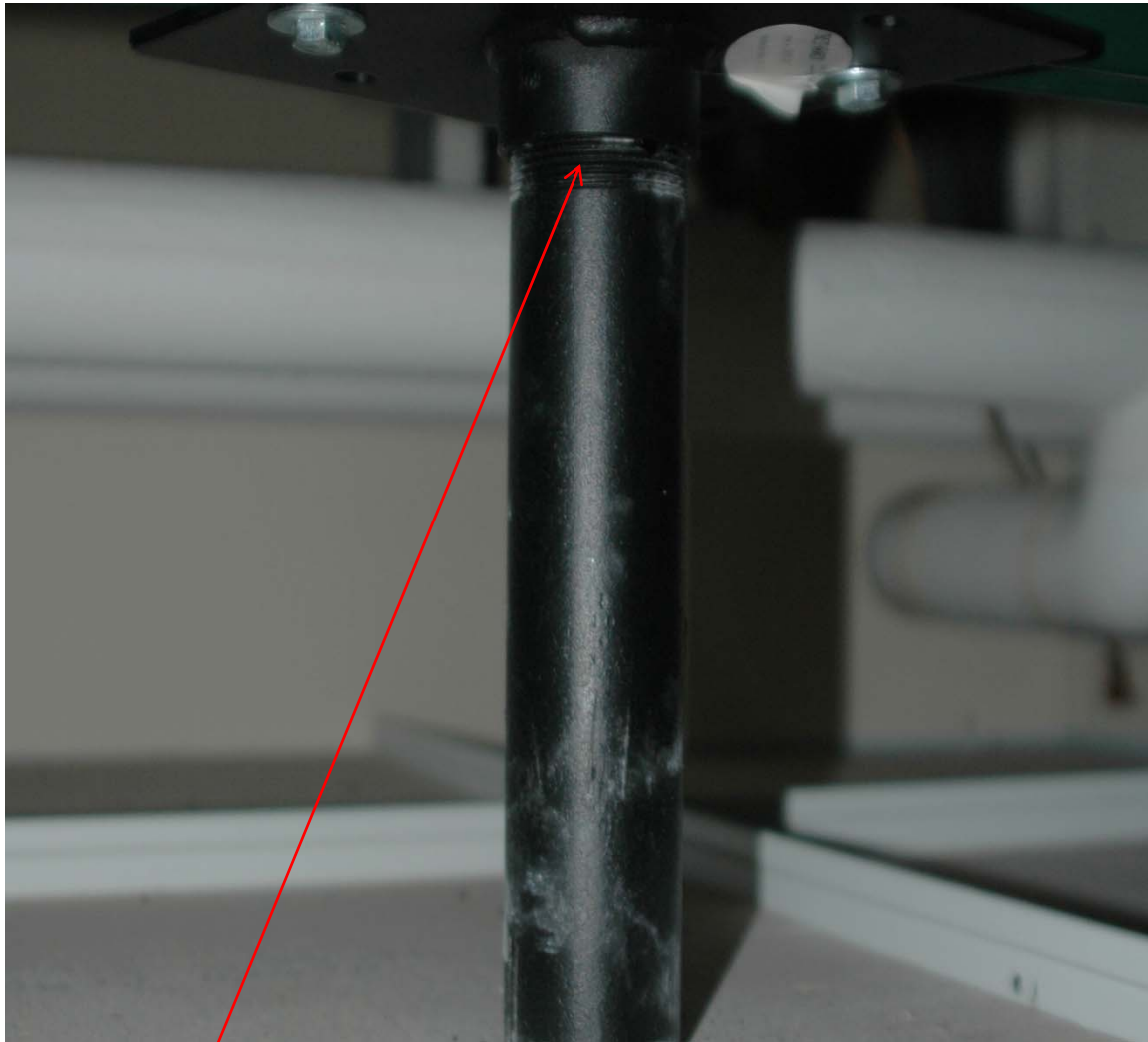


Flange on the top of the mount system



Flange on top of the TV mount – note set screws are into the mount

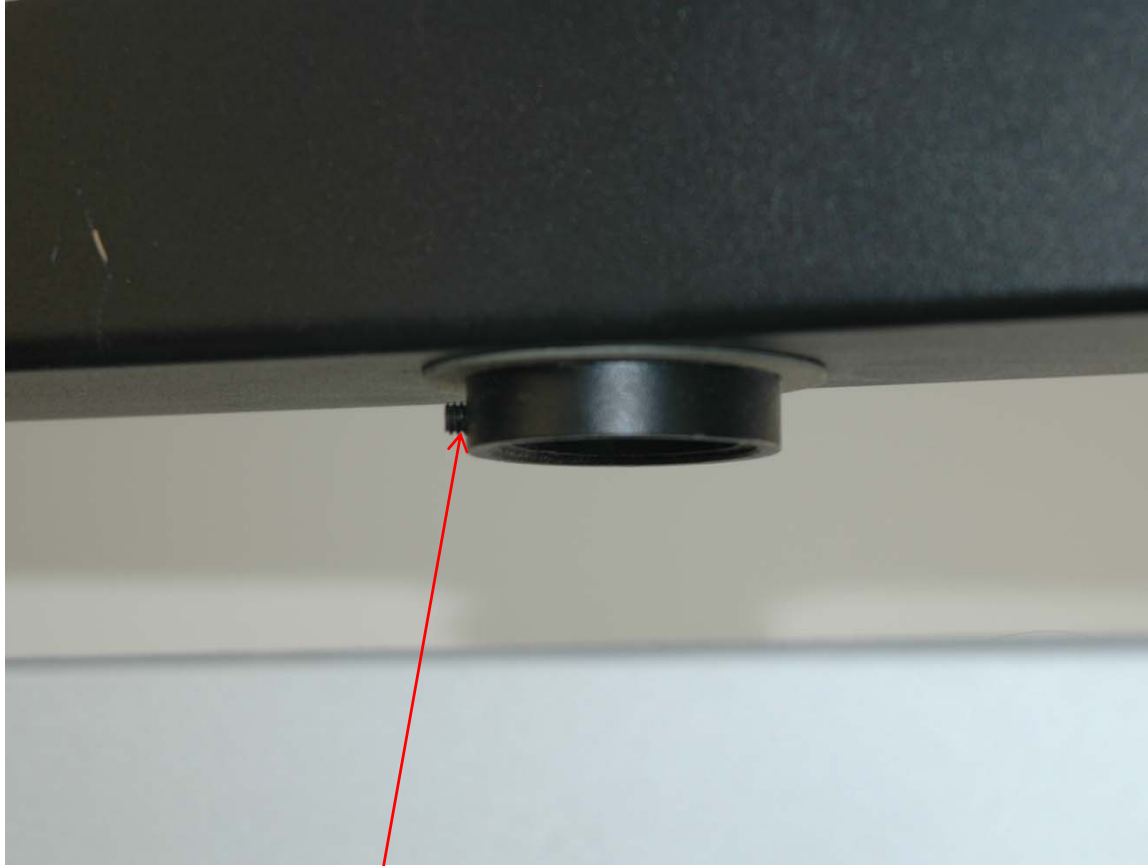
The scratches are not an issue in this discussion



Mounting system in the ceiling - flange system is used. Note threads on the pipe

TV mount with incorrect installation





Bottom flange – note the set screw is sticking out, indicating the screw is not in the slot of the flange. The screw goes up against the flange rather into the slot



Bottom flange – incorrect installation



Top flange –Set screw is sticking out. Incorrect installation.

Conclusion

It appears that the TV mount system was not installed properly. The set screw was not in the slot of the flange.

The TV with the mount was moved from side to side for viewing by the students. This would be a normal application of the mount.

As the TV was used since the summer of 2002, the flange started to unscrew from the pipe because the set screw was not positioned in the slot.

The TVs and the mount systems were installed by an outside contractor.